

# FreePBX High Availability



FreePBX HA is a commercially developed High Availability solution that has reworked the FreePBX platform to integrate DRBD, Cluster Manager and Pacemaker. This enables automatic mirroring and failover between two FreePBX Systems.

## FreePBX HA Disaster Recovery

FreePBX High Availability gives you more protection against hardware, software and storage failures.

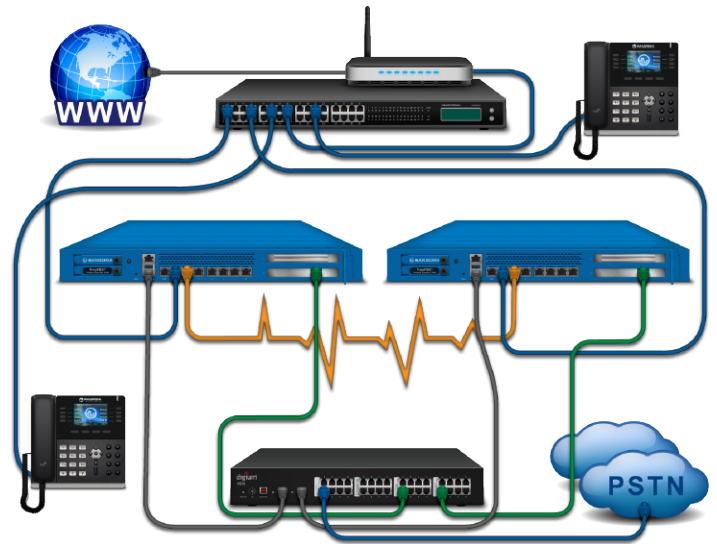
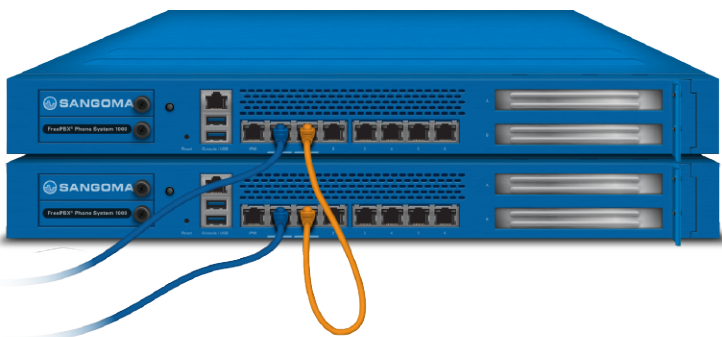
Your phones and devices are registered to a floating IP address, so the failover between systems will be transparent to them. Your SIP Trunks will register to the active node, and if utilizing a PSTN Failover Appliance (optional), your T1 or Analog lines will be directed to the active node as well.

Then when the primary PBX is repaired or recovers, you can switch back to the primary FreePBX node in just seconds.

Available Add-ons include:

- » SIPStation SIP Trunks
- » PSTN Failover Appliance
- » PSTN Cards
- » Sangoma IP Phones
- » Support

Setup and configuration of FreePBX HA is done in the FreePBX GUI, which you can also use as an online management tool to easily switch between nodes.



Here is an overview video of FreePBX HA:  
<http://vimeo.com/sangoma/high-availability>

For more information on using FreePBX HA please review our wiki here: <http://wiki.freepbx.org/display/FCM/FreePBX+High+Availability>

## FreePBX HA 1000 Appliance Bundle

This bundle includes two of our popular FreePBX 1000 appliances, pre-configured for High Availability. Each PBX is powered with:

- » Intel Xeon E3-1200 Quad Core Processor
- » Dual 240GB SSD Drives with Raid
- » 16GB of Memory
- » 7 Onboard GB Network Ports
- » IPMI for Fencing in HA
- » Support Up to 1000 Users